

# Encourager

Mid-South District LCMS | September 2017

## Focus for September

### Church Planting

*Then the eleven disciples went to Galilee, to the mountain where Jesus had told them to go. When they saw him, they worshiped him; but some doubted. Then Jesus came to them and said, "All authority in heaven and on earth has been given to me. Therefore go and make disciples of all nations, baptizing them in the name of the Father and of the Son and of the Holy Spirit, and teaching them to obey everything I have commanded you. And surely I am with you always, to the very end of the age."*  
*Matthew 28:16-20 NIV*

## Message from Rev. Dr. Roger Paavola, *President*



Fifteen minutes could save you 15% on your car insurance from GEICO. Progressive has a "Name your Price" tool. State Farm bundles car, home, and life insurance for a better deal. Farmers insurance covers wrecks caused by a squirrel that got caught in a man's pant leg and caused an accident. Liberty has a better car insurance deal so you don't have to drive a car with three wheels. General Insurance has Shaq O'Neil saying going to the General is the cheapest and best monthly coverage. Nationwide says it's on your side. So, who are we supposed to believe?! Their ads are everywhere and mostly all of them annoying. Couldn't they save us premium dollars if they just stuck to insuring our cars, instead of

spending billions of dollars on advertising?

So what does all of this have to do with church planting in the Mid-South? It illustrates what's happening to church planting. Every denomination does it. But what has the Church done to be about the Great Commission Jesus entrusted to His Church? Sally Morgenthaler, a church planting expert, uncovered some almost deflating information. Her studies of what the Church Growth Movement and unbridled commercialism has done to the modern Christian Church.

She has a strong passion for reaching unchurched souls, but suddenly realized that most methods of attracting the unchurched were totally wrong! She noted, "In 2001, a worship-driven congregation in my area finally did a survey as to who they were really reaching, and they were shocked. They'd thought their congregation was at least 50 percent unchurched. The real number was 3 percent. By 2002, a few pastors of praise and worship church began admitting to me that they weren't making a dent in the

surrounding non-Christian population, even though their services were packed and they were known for the best worship production in town... it wasn't hard to see that the biggest barrier to reaching the unchurched had little to do with worship technique or style."<sup>1</sup>

If her research is correct, we may conclude that throughout the few decades the Church Growth Movement has swung into full gear, there's apparently very little actual growth. The difference is what corporations call *market share*! In fact, compared to population growth in the United States, the Christianity is **losing** market share! The adoption of corporate techniques, aside from the instruments given by Christ to His Church, has only shifted deck chairs on the Titanic! There's relatively little real growth in America's pan-Christian Church. Morgenthaler's findings indicate that if the numerical growth did not happen before early on in the church plant, and if the pastoral leadership has changed, the possibility of replicating mega-church-like growth is practically zero. She notes, "The contemporary congregations that were well-established by the turn of the millennium - with 1,000 or more attendees and with the founding pastors still at the helm - seemed to grow exponentially, and they kept growing. These mega-survivors were invariably congregations

## St. Philip Lutheran Church Celebrates 70 Years



Celebration of the 70th Anniversary of St Philip Lutheran Church, Chattanooga, August 20, 2017. Celebrants for the event included Rev. Joseph Jacks, resident pastor; Rev. Ed Rosser, preacher; and President Roger Paavola, sending greeting from the District and Synod.

with visionary, talented leaders and the determination to do whatever it took to grow. Other contemporary churches without the 300-400 worshiping base began to deteriorate after the 1990's because they could no longer attract the unchurched people of their areas, but rather, "the disgruntled attendees from dwindling mainline congregations and failed, contemporary start-ups."<sup>2</sup>

What can we learn from this phenomenon? The Lutheran Church—Missouri Synod does not have a strong presence in the Bible belt states. We're also a Johnny-come-lately in the contemporary music band worship styles. We're empty portals awaiting disgruntled cast

offs from other contemporary congregations. Why the huge increases in some locations and the apparent deterioration in others? Morgenthaler was shocked by her own findings. It took an unchurched outsider to point out what commercialized worship picture has done. Morgenthaler recorded what she saw and heard - a worship theme that sounded, in her own words, more like a beer commercial than a worship of God.

She writes, "There are no sad songs, no angry songs. Songs about desperation, but none about despair. Worship for the perfect. The [ones] already [in the church were all who had] arrived. The good-looking,

<sup>1</sup> Sally Morgenthaler, "Worship as Evangelism," REVI!, Group Publishing, Inc., Loveland, CO, ([nancybeach.typepad.com/nancy\\_beach/files/morgenthaler/article.pdf](http://nancybeach.typepad.com/nancy_beach/files/morgenthaler/article.pdf).) May/June 2007, 49-50.

<sup>2</sup>Morgenthaler, 50.

inoffensive, and nice. No wonder the unchurched aren't interested. The 100-year-old congregation that's down to 43 members and having a hard time paying the light bill doesn't want to be told that the 'answer' is living life with the people in their neighborhoods. Relationships take time, and they need an attendance infusion *now*...I wasn't going to give them false hope. Some newfangled worship service wasn't going to save their church, and it wasn't going to build God's kingdom. It wasn't going to attract the strange neighbors who had moved into their communities or the generation they had managed to ignore for the last 39 years."<sup>3</sup>

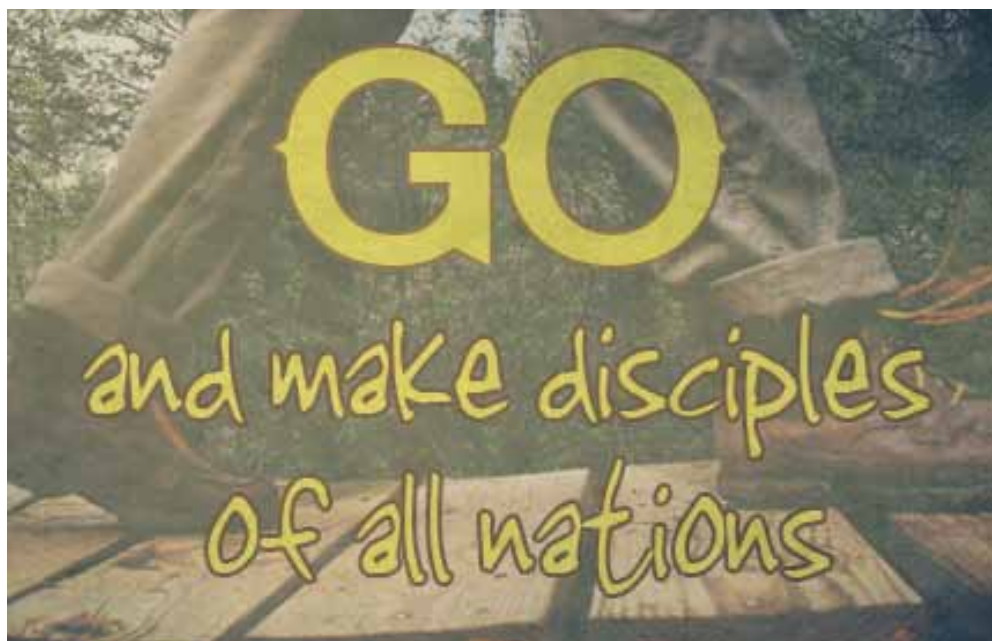
The Mid-South District needs to be planting churches and strengthening our existing congregations. We need to accomplish planting in the most effective and efficient ways. But, church planting is hard work! It takes the right person, the

right place, and the right plan – the Great Commission. The American public is becoming increasingly inclined *away* from the church. Throwing money at the problem isn't the answer. But, we have a gigantic advantage no one else has in the "Battle of the Bible Belt." We have a Confession unlike anything else offered by the traditional Bible Belt venues. The only difficulty we face is getting the message out.

Rev. Richard Elesroad, who has served on the District's Church Planting Committee for over 10 years, comments on what happened in the "Mid-South District's Way." He said, "In my observation, the success of The Point in Knoxville, in contrast to other church plants in the Mid-South District, was the result of one key factor. Yes, it had a strong mother church in Grace [Lutheran in Knoxville]. Yes, it also had a very gifted church planter in Pastor Matt Peebles. These two factors are

absolutely vital. But, where other church plants emphasized small groups or missional communities, The Point put all its energy in inviting people to worship services. Their worship was definitely contemporary in style, but it emphasized the Sacraments and excellent preaching. My term for this is an "attractational" ministry. They attracted and invited people to a church service rather than building up to a service with small groups or community groups. They used many, many forms of advertising with radio chief among them. They also did many community events. Yet, it was only after they reached a certain size that they formed small groups. This way of planting helped speed up the church's growth and financial self-support. Early in its second year, I knew The Point would succeed in becoming a strong independent and ever growing church."

Our District's objective is to bring this Lutheran Confession to be embraced by new Christians throughout the District. We're committed to planting new churches and re-planting churches where our "Lutheran footprint" is needed and yet to be developed areas. It's not about putting more people in our pews or bringing more dollars to balance our budgets. It's about being God's stewards to bring new believers into the Light of Christ. But, it's not about generic Christianity



<sup>3</sup>Morgenthaler, 52

– otherwise we could save thousands of dollars and support non-denominational church starts. This is why we hold a Confession distinctly different that the world needs to hear. If that isn't fundamental in our church planting, we'd have fallen into the abyss of car insurance companies – saying we're better than the other "companies," but without the substance to prove it.

There are over 3 million unchurched people in the Mid-South! It's our mission field. Jesus gave us a mandate to pray as He looked to the multitudes as sheep without a shepherd and said, *"The harvest is plentiful, but the workers are few. Pray therefore, to the Lord of the Harvest, that He would send forth workers into His fields!"* (Matthew 9:36-38) God is a missionary God! He calls people to ministry and missions. Accordingly

He gives gifts and abilities to do His work. God's desire for evangelization is found in His character (love, authority, truth, holiness, honesty, compassion, and mercy). *He wills that none will perish, but that all should come to repentance in Christ.* (II Peter 3:8-9) A good ad agency would've told God to make sure He did church planting with the right tools! They'd have done a demographic study to find and target a specific age group. They'd have managed the message to appeal to a target audience. They'd have told God to make sure this new church had the best music program, song leaders, youth program, best ministries for young adults and seniors. There'd be billboards, flyers to pass out, and a building program so they could have a state of the art Worship Center and Sunday school space.

But, we know God didn't do it that way. He built His church out of common, ordinary, unimpressive materials. Why did it work? Acts 2:47b says *"... and the Lord added to the church daily such as should be saved."* We can't overlook opportunity we have to bring people to Christ. St Paul wrote, *"Pray for us, too, that God may open a door for our message, so that we may proclaim the mystery of Christ, for which I am in chains."* (Colossians 4:3) Shouldn't we seize every opportunity to tell others about Jesus? Pray for our church planters. Pray for our church plants that the Lord will bless their work to bring the Gospel to those who still live in darkness, that they may come to the marvelous Light of our Savior Jesus Christ.

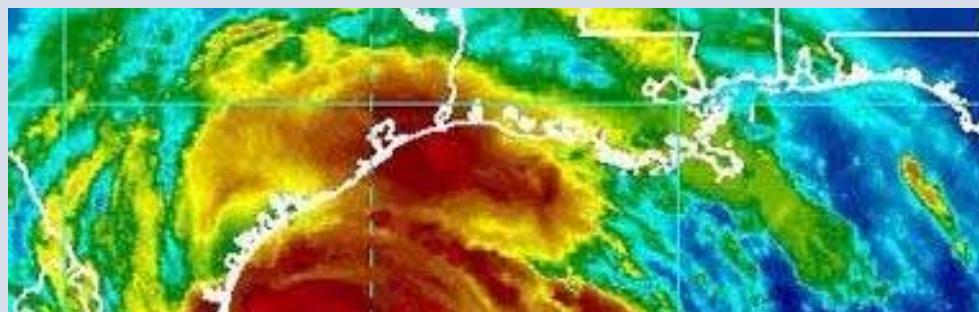


## How To Help In the Wake of Hurricane Harvey

As we see the images and hear the stories of people impacted by the devastation of Hurricane Harvey, we are all moved to respond in God's love. To help our congregations coordinate an effective response to this disaster, the Mid-South District Office recommends the following methods of support:

### **MONETARY DONATIONS**

100% of Harvey relief funds received by the Mid-South District will be forwarded to the Texas and Southern LCMS Districts for their ongoing support efforts. Checks made



payable to the Mid-South District and designated for "Harvey Flood Relief" can be sent to:

Mid-South District Office  
1675 Wynne Road  
Cordova, TN 38016

Donations can also be made on the Mid-South District website

by visiting <https://mid-south-lcms.org/> and clicking "GIVE NOW." Simply enter the donation amount in the "restricted" field and designate the gift for "Harvey Flood Relief."

### **VOLUNTEERING**

At this time, LCMS World Relief is coordinating a large "hands on"

support effort, pending approval and instruction from emergency response agencies in the affected areas. If your congregation has a team of volunteers ready to help with the Hurricane Harvey recovery, please visit <https://>

[www.lcms.org/harvey](http://www.lcms.org/harvey) and click on "VOLUNTEER."

We know that as you prepare to meet the immediate physical needs of those impacted by this terrible disaster, you will also be lifting them in prayer--as will we

here at the District office. If you or any member of your congregation has questions about the Hurricane Harvey response in the Mid-South District, please call our office at 866.373.1343.

## SHARPS CHAPEL BUILDING FUND GROWS



Pictured L-R: Cindy Garretson, treasurer; Jane Bruns, secretary; Jeff Landis, president; Pastor Paul; Margo McCaffery, realtor; Tom McCaffery, vice-president

At the Sunday, August 6 worship service, Paul Kritsch, pastor of Chapel of the Good Shepherd Lutheran Church, Sharps Chapel, TN announced that the church's Norris Shores property has been sold and that as a result the church's building fund more than doubled. At the announcement, the congregation broke into applause and stood to sing the Doxology: Praise God from Whom All Blessings Flow.

"Our congregation has been truly blessed by generous people," noted Pastor Paul. "Wendy and Gary Krueger who donated the property which was sold, Dawn and Bill Protzer who donated the land on Sharps Chapel Road on which our first church building will be built, and Margo McCaffery who is a church member and realtor who worked so hard to make the sale of the land a reality are all examples of the people whom the Lord is gathering as our church."

The congregation is confident that at God's timing their first building will become a reality.

Currently worship services are held each Sunday at 10:30 AM in the Community Center, 1542 Sharps Chapel Road. A weekly neighborhood Bible breakfast meets each Tuesday at 9:00 AM, also in the Community Center.

The church actively seeks to support their community through the gathering of diapers and baby food which are shared through the Union County Food Bank, an annual children's coat give away, this year on October 21, the gathering of paper products to be given out at the December 9 Union County Charities Giveaway, and by working at the monthly Second Harvest food distribution at Upper Room Ministries in New Tazewell. On September 15, the church will host its 3rd Annual Patriot Day Dinner to honor the Sheriff's Department, Station 51 Volunteer Fire Department and Ladies Auxiliary, the Sharps Chapel Emergency Squad, and the local Fire Prevention and Forestry Service.



# Reformation Choral Concert

Friday, October 13, 2017 • 7:15 pm

## University of Memphis Rose Theater

(470 University • Memphis, TN 38111)

- Featuring a Choir of Over 75 Voices & Instrumentalists, Including Members of the U of M Collegiate Choir & Memphis Symphony Orchestra
- Performances of Both Lutheran Hymns & Bach Classics
- A Stirring Musical Tribute Marking the 500th Anniversary of the Protestant Reformation Led by Martin Luther

*Jeremy T. Warner, Conductor*

**FREE and Open to the Public**

RESERVE your seats online at: [reformation.mid-southlcms.org](http://reformation.mid-southlcms.org)

A WEEKEND OF SPECIAL EVENTS WITH THE MID-SOUTH DISTRICT, LCMS  
GENEROUSLY SPONSORED BY OUR FRIENDS AT  THRIVENT FINANCIAL



# Oktoberfest

## Saturday, October 14, 2017

### 10 AM-2 PM, Immanuel Lutheran Church & School

(6325 Raleigh LaGrange • Memphis, TN 38134)



### A Traditional German Festival Featuring...

- Oompah music from Bob Westbrook & The Edelweiss Band
- German food favorites & beer from Ghost River Brewery
- Martin & Katie Luther costume contest and photo booth
- Live auction of unique themed baskets
- Great activities for kids!



- Bounce House    -Face Painting    - Games
- Magician & Balloon Man    - Chicken Dance Contest



*A portion of proceeds from this event will support International Missions of the Lutheran Church - Missouri Synod*

**Adult Tickets • \$10**

Includes German meal & 2 craft beers/beverages

**Ages 4-12 • \$5**

Includes meal & beverage

Free admission under age 4

Purchase your tickets ONLINE at:

[reformation.mid-southlcms.org](http://reformation.mid-southlcms.org)

Tickets also available on event day AT THE GATE



## Workshops have begun

The Mid-South District invited Rev. Dr. Mark Wood from the LCMS Office of National Mission in St. Louis to conduct the "Every One His Witness" workshop. There were 3 beta-test sites held across the district: Christ the King, Memphis, TN; Shepherd of the Hills, Crossville, TN; and First, Hot Springs, AR.

Multiple congregations were represented at all locations, with 30-50 people in attendance at each event. Dr. Wood's office is finishing the materials for these workshops which will be made available to all congregations this fall in the form of a DVD.



Memphis



Crossville



Hot Springs



The Installation of **Associate Rev. Travis Ferguson** at Grace Lutheran Church, Knoxville, TN on July 30, 2017.

*L to R* – First Row: Rev. Bill Couch, Rev. Travis Ferguson, Rev. John Schutz  
*Second Row:* crucifier Will Haynes, Rev. Robert Portier, Rev. Linsey Dettmer, Rev. Louis Trebus, Rev. David Graves, Certified Lay Minister Bruce Collet, acolyte Eli Roth  
*Third Row:* Rev. Derek Roberts, Rev. Philip Bohlken, Rev. Adam Woldt, Rev. Rich Elseroad, Rev. Stephen Skov, Rev. Paul Kritsch, Rev. Michael Miller.

## *Welcome to the Mid-South District*



The **Rite of Ordination** was held for **Rev. Thomas T. Presley** on Sunday, August 13, 2017 at Grace Lutheran Church, Huntsville, Alabama. The Installation of Rev. Presley will take place in Mountain Home, AR on September 17.

Rev. Presley will assume his role as associate pastor and church planter in the Jonesboro Circuit of the Mid-South District in Mountain Home at Redeemer Lutheran Church.

Pictured with him include (L-R) *Top row:* Rev. Andrew Smith, Rev. Ival Toepke, Rev. Bernie Ansorge; Collin Ford, vicar; Rev. John Ninke; and Rev. Pat Carlson. *Bottom Row (L-R)* President Roger Paavola; Rev. Presley; Rev. Russ Gipson; and Rev. John Easterling.





President's Forum held at the District offices July 24, 25, 2017. The President's Forum is a time when the Presidents Emeriti come to hear the major events affecting the Mid-South District, and assist in planning for the future endeavors of the District in service to our congregations, schools, ECC's, and professional church worker staff. Pictured are President Norm Groteluschen, President David Callies, and President Roger Paavola. President Emeritus, Rev. Ken Lampe was unable to attend this year's Forum.

## Congregational Mission Commitments

### Mission Commitment Receipts as of 07/31/17 (7 Months)

Anticipated Amount (58.33% of budget).....	\$917,667
Actual Receipts.....	904,494
Over (under) anticipated amount .....	(\$13,173)

### Use of Mission Commitment Receipts (7 Months)

Allocated to Synod for World Missions .....	\$256,765
Allocated to Tanzania .....	14,583
Retained for District Mission/Ministry Support (70% of receipts) .....	633,146
Total Receipts .....	\$904,494

### Mission Commitment Receipts Prior Year Comparison (7 Months)

Actual Receipts as of 07/31/17 .....	\$904,494
Actual Receipts as of 07/31/16 .....	\$917,575
Over (under) prior year receipts .....	(\$13,081)



## Date set for CARE-VAN November 3-4, 2017

*The work of our hearts and hands is an immeasurable blessing to families in need around the world!*

**LWR Project** - Join Lutherans across the U.S. in commemorating the 500th anniversary of the Reformation, being servants of all by making LWR Kits of Care!

**What You Support** - For families who have lost everything due to a natural disaster or violence, small items of comfort — a warm quilt, a bar of soap, a set of pencils — let them know someone overseas cares.

**LWR Quilts & Kits** convey a priceless message of love and commitment to people in desperate need. In 2016, Lutheran World Relief delivered more than \$14 million worth of Quilts and Kits for just \$1.7 million in operating costs. A neighbor in need receives \$9 worth of items for every \$1 given to the shipping fund.

If you are interested in the assembly instructions for quilts and kits you may request a copy of these pamphlets by calling 800-597-5972 or logging on to the <https://lwr.org> website.

If you have a question or need labels, don't hesitate to e-mail Julie Tyler at [jtyler@mid-southlcms.com](mailto:jtyler@mid-southlcms.com) or give her a call (1-866-373-1343 toll free). The CARE-VAN mailing will be sent to participating congregations the mid part of September. The CARE-VAN location sites will be listed in the October Encourager.



## FIND A SCREENING NEAR YOU!

Martin Luther The Idea that Changed the World. The rousing adventure story of Martin Luther's life, following his bold quest for truth—a journey that would reshape the church, and the world.

Additional Reformation events can be found at <http://reformation.mid-southlcms.org>

DATE	PRESENTED BY	VIEWING	TIME
October 4	Peace Lutheran	<u>Cinemark Towne Center in Conway, AR</u>	6:30pm
October 19	Shepherd of Peace and Trinity	<u>Regal McCain Mall Stadium 12 &amp; RPX</u> in North Little Rock, AR	6:30pm

## AUGUST TRAINING WORKSHOPS



*Our Feeding Program Administrators and Haitian Directors at the August Workshop Training in Haiti.*

August is an important time for Trinity/HOPE. We started the month with a celebration event to recognize and honor our hard-working volunteers and supporters, quickly moved to our annual board meeting and then headed to Haiti where we hosted a three-day training workshop for all our Haitian Feeding Program Directors. The workshop allows us to prepare for the upcoming school year, teach new procedures, set goals and continue to develop our Haitian staff. It is a great time for our Feeding Program Administrators from the United States to build a stronger relationship with the Feeding Program Directors and unite our efforts to be good stewards of all God's blessings shared with the children in Haiti. To see these Godly men excited about their work and sharing God's love with the students, teachers, and cooks is energizing! This year we praise God that the program was extended to four more schools adding 750 meals bringing our daily total meals to 24,000! Please pray for all involved in this upcoming school year and that more hearts are moved to follow Jesus, and lives improved by the saving witness of the meal they receive each day.



# Prayer Summary, August 2017

Following is a list of all the people that have appeared on the Mid-South District website prayer list [www.mid-southlcms.com](http://www.mid-southlcms.com) during the month of August 2017.

## PRAYER CONCERNS

**MS. SHERRY COSTELLO** (secretary at Trinity, Pine Bluff, AR)

**MS. SARA FEURESTEIN** (daughter of Rev. Donley Hesse, Mena, AR)

**MR. BILL FOWLER** (husband of Angela Fowler, Mid-South District, Cordova, TN)

**MRS. NANCY HERD** (wife of Rev. Cliff Herd, EM, Chattanooga, TN)

**REV. DONLEY HESSE** (Emeritus, Mena, AR)

**MR. ADAM JANSEN** (brother of Rev. Nathan Jansen, Burns, TN)

**MR. RICHARD MEYER** (Bella Vista, AR)

**MRS. MEGAN NAVRATH** (daughter of Rev. Carl and Gwen Wenck, Grace, Murfreesboro, TN)

**REV. KURT REINHARDT** (Stratford, ON)

**REV. DAVID RUBKE** (Tullahoma, TN)

**REV. MERLIN SEPMEYER** (Crossville, TN)

**MR. LEE SMITH** (Smithville, TN)

**MRS. CHLOE SWANSON** (wife of Rev. Herb Swanson, Lamar, AR)

**MRS. SUE ANN TOOPES** (wife of Rev. Andy Toopes, Holy Trinity Lutheran Church, Bowling Green, KY)

**ADDIE JO WEATHERLY**

**MRS. MARGARET WENCK** (mother of Rev. Carl Wenck, Grace, Murfreesboro, TN)

## Our deepest sympathies to:

**President Roger and Pat Paavola (MDS) and family** as they mourn the loss of Pat's mother, Myrtle Arvidson, who passed away on Wednesday, August 2, 2017.

**President Steve Turner** (Iowa District West President) **and family** as they mourn the loss of his father, Mr. Ed Turner, who passed away on Thursday, August 10, 2017.

**Rev. Kevin Conger** (Hope Lutheran, Jacksonville, AR) **and family** as they mourn the loss of Kevin's son-in-law, Brandon, who passed away.

**The family and friends of Rev. James Roberson** (Emeritus, Knoxville, TN) who passed away on Sunday, August 13, 2017.

## CALL UPDATE

### ORDAINED MINISTERS

**ACCEPTED: Rev. Jim Jobst**, Faith Lutheran Church, Magnolia, AR, has accepted the call to serve as pastor of Holy Cross Lutheran Church in Prior Lake, MN.

**Rev. David Riley**, Intentional Interim Pastor of St. John's Lutheran Church, Westfield, MA, has accepted the call to serve as Pastor of St. John's Lutheran Church, Westfield, MA.

**PENDING: Rev. Dr. Lucas Woodford**, Zion Lutheran Church, Mayer, MN, has been issued a call to serve as **Executive Director of Mission and Ministry at the Mid-South District.**

**Rev. Neil Vanderbush**, Christ Lutheran Church, Lubbock, TX, has been issued a call to serve as **Pastor at Faith Lutheran Church, Bentonville, AR.**

### IN THE CALLING PROCESS – CONGREGATIONS

**Athens Lutheran Church, Athens, TN – Pastor**  
**Faith Lutheran Church, Bentonville, AR – Pastor**  
**First Lutheran Church, Knoxville, TN – Pastor**  
**Grace Celebration Lutheran Church, Cordova, TN – Pastor**  
**Trinity Lutheran Church, Memphis, TN – Pastor**

### COMMISSIONED MINISTERS

**ACCEPTED: Ms. Ann Laury, Memphis, TN**, has accepted the call to serve as Principal at Christ the King Lutheran School, Memphis, TN.

**Ms. Sara Walker, Harlingen, TX**, has accepted the call to serve as Teacher at Concordia Christian Academy, Jonesboro, AR.

### IN THE CALLING PROCESS - COMMISSIONED MINISTERS

**Belvoir Christian Academy, Chattanooga, TN – Principal**  
**First Lutheran Church and School, Fort Smith, AR – Principal**  
**First Lutheran Church and School, Knoxville, TN – Principal**

## SHARE YOUR REFORMATION EVENT WITH US



The Mid-South District has established a webpage to serve as “information central” for Reformation-related events and news happening in celebration of the 500th anniversary. If your congregation has an event to be included on the site, please email [webmaster@mid-southlcms.com](mailto:webmaster@mid-southlcms.com) with a link to the event on your church website. Visit the site at [www.reformation.mid-southlcms.org](http://www.reformation.mid-southlcms.org) to see the great events already listed.

## Staff of the Mid-South District, Lutheran Church-Missouri Synod



Rev. Dr. Roger Paavola  
*President*

Paul Reaves  
*Executive Director for LCEF Vice President  
and Executive Director for Development*

Angela Fowler  
*Executive Director for  
Business and Finance*

Allen Piepenbrink  
*District Education Executive for  
Education and Preschools*

Carolyn Metzger  
*Finance Assistant*

Rena McElwain  
*LCEF Communications & Marketing Specialist*

Julie Tyler  
*Administrative Assistant  
for Missions and Education*

Alison Hawkins  
*Administrative Assistant  
to the District President*

### Contact the Mid-South District

1675 Wynne Road  
Cordova, TN 38016

PHONE: 866.373.1343 / 901.373.1343  
FAX: 901.373.4826

### Stay Connected With Us

ON THE WEB -  
“mid-southlcms.org”

ON FACEBOOK -  
“Mid-South-LCMS”

ON TWITTER -  
“@midsouthLCMS”

### Contribute to The Encourager

The Encourager is a monthly newsletter from the Mid-South District LCMS. If you would like your article or event published in the next Encourager, please email it by **September 23, 2017** to Rhonda, [webmaster@mid-southlcms.com](mailto:webmaster@mid-southlcms.com)